

SHORE RIVERS ADVOCATE

CHESTER RIVER | CHOPTANK RIVER

MILES & WYE RIVERS | SASSAFRAS RIVER



SPRING 2018

Welcome from

BOARD CHAIR **BRENNAN STARKEY** and EXECUTIVE DIRECTOR **JEFF HORSTMAN**



BRENNAN STARKEY

Dear Friends,

Welcome to *ShoreRivers Advocate*, the first semiannual printed newsletter from ShoreRivers, an organization created by combining the Chester River Association, Midshore Riverkeeper Conservancy, and the Sassafras River Association into one region-wide entity.



JEFF HORSTMAN

By merging, we became more than just the sum of our parts—we are now one committed voice with more influence on policy, more

capacity to enact programs, and more potential to undertake large restoration projects, all to reduce pollution. We will continue to maintain our local focus on our Eastern Shore rivers with our four Riverkeepers, local watershed boards, and members like you who are committed to improving the health of our rivers, creeks, and streams.

The conversation about combining the three organizations began exactly one year ago. Each legacy organization brought distinct strengths to the table, and it was obvious from the outset that we meshed well from a programmatic, philosophical, and personnel standpoint. Our community demographics are similar and the causes and solutions to our water pollution issues are the same. Discussions and meetings were held through the spring and early summer, and a final unanimous vote to merge occurred in August with an official launch date of January 1, 2018.

Merging was a big and complex step and one not taken lightly. Change can be difficult, but it can also be powerful and energizing. We are so impressed by the excitement, enthusiasm, and synergy evident in our staff as they have embraced the new organization. We are expanding environmental programs in all our watersheds. The ShoreRivers board is engaged and brings talent and experience that will help guide and sustain the organization in the years to come. Our volunteers and watershed boards are focused on the local level, building on the strengths and accomplishments of the three legacy organizations and utilizing the new skills and expertise we have gained through the merger to advance our mission:

RESTORE AND PROTECT OUR RIVERS

In the pages that follow, you will read about the impactful and influential work that the 20 professionals at ShoreRivers, working in concert with our volunteers and community supporters, are already accomplishing to achieve healthier waterways—work comprising science-based advocacy, restoration, and education, enabling us to serve as your informed and objective voice for our rivers.

ShoreRivers is committed to *Healthy Waterways Across Maryland's Eastern Shore*, and we appreciate your continued support in this effort!



RESTORATION *and* AGRICULTURAL OUTREACH



Pictured left to right are ShoreRivers staff members Emily Harris, Kim Righi, Kristin Junkin and Josh Thompson

Our newly merged organization has brought together leaders in the restoration and agricultural outreach fields. We are actively collaborating with farmers and landowners to solve problems of nutrient and sediment loss. We are an incubator for new ideas and technologies, designing, funding, and managing major restoration projects that will improve our waterways.

ShoreRivers works with engineers, contractors, governments, and landowners to implement strategic restoration projects, and is certified by the National Fish and Wildlife Foundation as a Technical Service Provider. For more information, contact Tim Rosen at trosen@shorerivers.org.

- **PROJECT COST:** \$1,200,000 from Maryland Department of Natural Resources
- **POLLUTION REDUCTIONS (ANNUAL):** 307 lbs of nitrogen, 278 lbs of phosphorus, and 31 tons of sediment

BELOW, WE HIGHLIGHT ONE OF OUR MANY ONGOING PROJECTS:

SWANTOWN CREEK RESTORATION

For decades, Swantown Creek has been a notorious problem in upper Kent County and the Sassafras River. Rain events have created a massively eroded woodland gully, which receives runoff from a no-till grain farm and a residential community. The ravine begins at the field edge as a massive headcut, transitions to a perennial stream and then to tidal freshwater wetlands where it meets Swantown Creek. Stormwater creates vast plumes of sediment pollution in the river, and the headcut is encroaching into the adjacent upstream field.

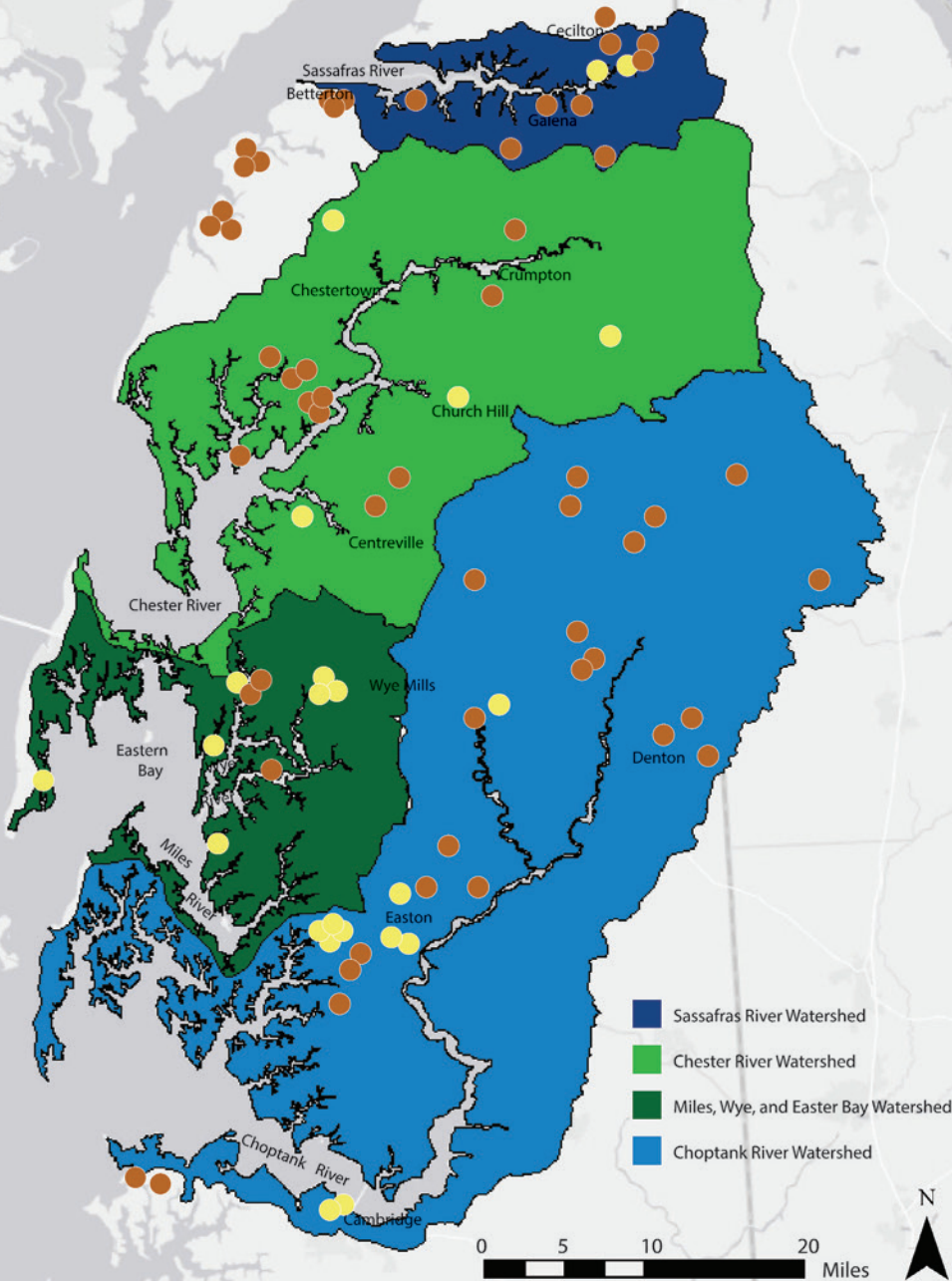
For years, riverfront landowners have complained about sediment turning the river chocolate after storms, silting-in coves, and choking aquatic life. The enormous ravine carved out was recently over 30 feet deep. The massive deposit of sediment that has accumulated at the convergence of the stream and Swantown Creek has stretched across the entire creek and effectively choked tidal flow and flushing action to the upper creek, decreasing dissolved oxygen and creating algal blooms.

After legacy organization Sassafras River Association spent years creating a partnership to solve this problem, obtaining funding, and finalizing a design, we have begun construction to remedy this erosion. The project will restore 4,100 feet of actively eroded stream, using log-and-boulder weirs and raising the streambed within the ravine. A series of shallow infiltration ponds on the upstream farm field will capture, treat, and slow water at each stream reach. The entire site will be stabilized and planted with native trees and shrubs, and seeded with a native grass mixture. Under the management of ShoreRivers Restoration Specialist Josh Thompson, this work will be completed this year.



SHORERIVERS' PROJECT MAP

Reducing Pollution on the Eastern Shore



ADDITIONAL RECENT OR ONGOING KEY PROJECTS:

- CHESAPEAKE COLLEGE RESTORATION
Wye Mills
- NATURAL LANDS PROJECT
Queen Anne's and Talbot Counties
- CONSERVATION DRAINAGE INITIATIVE
Eastern Shore of Maryland
- SEARS FARM DITCH & STREAM RESTORATION
Easton
- JONES DAIRY STRUVITE REACTOR
Kent County
- CRAWFORD FARM WETLANDS
Warwick
- GUNSTON SCHOOL RESTORATION
Centerville
- STARKEY FARM TREATMENT WETLANDS
Galena

Pollution Reduced Every Year (lbs)				
Project Location	No. of Projects	Nitrogen	Phosphorus	Sediment
● Farmland	54	29,177	9,859	1,000,999
● Non-Farmland	23	2,631	889	345,898
Total	77	31,808	10,748	1,346,897



CHOPTANK RIVERKEEPER LOG



MATT PLUTA

Old Man Winter had a fierce grip on the Choptank River earlier this winter as we saw nearly a 100% ice cover between our shores. It made for a stunning site as we traveled around our watershed and back and forth to our

state capital advocating for clean water protections and working on our many local initiatives.

With the Tred Avon River, Harris Creek, and the Little Choptank River designated as oyster sanctuaries, the Choptank River is ground zero for oyster restoration. We've been working hard to see that restoration efforts continue, despite the roadblocks put up by opponents. One of those sought to prohibit the use of alternative substrate, even at a time when recycled oyster shell is extremely limited. But I'm happy to report that after meetings with watermen, scientists, and federal restoration partners, the Maryland Department of Natural Resources approved the use of alternative substrate in the Tred Avon River restoration plan. This decision is significant as it comes after the industry representatives were successful in advocating restricting alternative substrate for restoration work earlier in 2017.

THE GOOD OYSTER NEWS DOESN'T STOP THERE. In February of this year, ShoreRivers announced our participation in the Chesapeake Oyster Alliance. **Our goal: restoring oysters to the Bay by 2025!**

Below I've highlighted some of the many initiatives our Choptank River team has been working on. As always, I welcome questions or comments from our members and the public.

- **CAMBRIDGE CREEK PROJECTS**—ShoreRivers completed its Cambridge Creek Watershed Assessment, identifying over 100 priority projects to restore the main waterway that runs through the city. Dorchester County has already become engaged, agreeing to implement a high priority stormwater project on county property adjacent to the creek. We are actively working with the city and other partners to obtain funding and tackle the issues facing this heavily pressured system.
- **CAMBRIDGE CLEAN WATER ADVISORY COMMITTEE**—Comprised of representatives from the City of Cambridge, Chesapeake Bay Foundation, Eastern

Cambridge Creek Watershed Assessment and Action Plan

January 1, 2018



Prepared By:

ShoreRivers
114 S. Washington Street
Easton, MD 21601
443-385-0511
info@shorerivers.org
www.shorerivers.org

Funded By:

Chesapeake Bay Trust
Watershed Assistance Program
60 West Street #405
Annapolis, MD 21401
410-974-2941
www.cbtrust.org



Shore Land Conservancy, Nanticoke Watershed Alliance, and Maryland Sea Grant College at the University of Maryland, I am now leading this committee as its chair. We are coordinating efforts to implement the projects listed in the Cambridge Creek Watershed Assessment and advocate for other clean water initiatives with local government.

- **MARYLANDERS GROW OYSTERS**—We have plans in place to greatly expand our program in the Choptank River with a focus on the Tred Avon River and Cambridge. Volunteers needed!
- **DENTON GAS TURBINE POWER PLANT AND PIPELINE**—We are investigating and studying a proposal to build a 600MW gas turbine power plant near Denton, MD and construct a pipeline from Rising Sun, MD to Accocack, VA that would intersect all of our watersheds. We intend to develop a position on this project and remain involved in its many layers of consideration.
- **VALLEY PROTEINS, INC.**—ShoreRivers is involved in the permit proceedings of this chicken waste rendering plant in Dorchester County that is seeking to expand its operations and discharge, which raises concerns of triggering blooms of microcystis-producing toxins.

LEGISLATIVE UPDATE

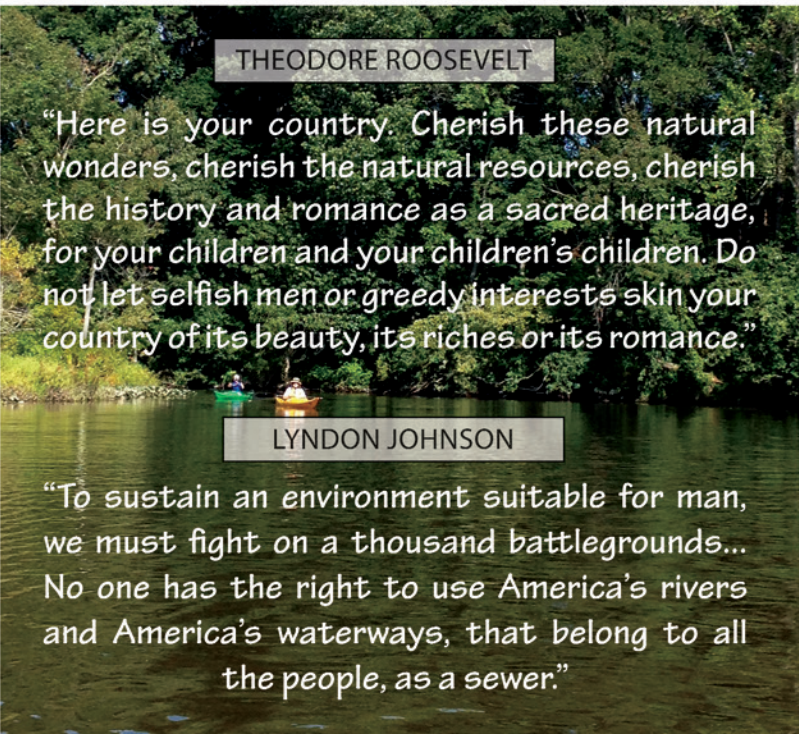
SHORERIVERS SUPPORTED:

- **TEMPLEVILLE**—ShoreRivers has been approached by farmers and residents to address a nutrient problem that is contaminating the town pond. We are working with a University of Maryland lab to analyze samples for sucralose, an indicator of human waste and failing septic systems.
- **PRETTYMAN MOBILE HOME PARK**—The owner of this park, after being ordered by Maryland Department of the Environment to build a private waste water treatment facility, built it in the wrong place, too close to the creek, and its discharge is impacting the waterway and irrigation water for a nearby vegetable farm. We are working with local citizens and their attorneys on solutions.
- **VULCAN COMMERCIAL BARGE**—Vulcan Materials owns the gravel yard at Easton Point and regularly runs barges up the Tred Avon that are oversized and scour the river bottom, creating sediment plumes and threatening the oyster sanctuary site. When Vulcan applied for a tidal wetlands permit to dredge its loading dock area, ShoreRivers intervened. The permit process is now on hold pending Vulcan's agreement to modify its barge practices.
- **WILLISTON LAKE**—This lake owned by the Girl Scouts has been closed due to mycosistis toxins. We recently obtained a NFWF grant to complete a watershed assessment to remedy this issue.
- **GREENSBORO TREE INITIATIVE PHASE 2**—We are implementing an urban tree planting initiative as a follow up to the tree canopy assessment we completed for the town in 2017.

- (SB138/HB3) U.S. Climate Alliance Membership (effort to include the State of MD)
- (HB458) Sale or Transfer of Home in the critical area utilizing a septic system requires the use of Best Available Technology for Nitrogen Removal
- (HB719) Requires that Septic Systems installed within 1,000' of nitrogen impaired waters use Best Available Technology. (Applies to non-tidal as well as tidal waters)
- (SB610/HB766) Forest Conservation Act—Requires a minimum of a 1:1 replacement when trees are destroyed during development
- (HB1381) Mandatory County Reporting Requirements on Environmental Violations
- (HB1765) On-Site Sewage Disposal Systems—Watershed Implementation Plan and Bay Restoration Fund Disbursements and Financial Assistance—Requirement to create a Septic Stewardship Plan confirming that upgraded septic systems are properly reducing nitrogen loads.
- (HB538) Expanded Polystyrene Food Service Products—Prohibition (Styrofoam Ban)
- (HB572) Sunset Repeal of the Oyster Shell Recycling Income Tax Credit—Reinstates and raises the tax credit that businesses and restaurants get if they recycle their oyster shell
- (HB1199) Northern Bay Crossing—Repealing and prohibiting a northern crossing of the Chesapeake Bay with a terminus in Kent County.
- (HB1221) Protection of Personal Information in Nutrient Management Plans

SHORERIVERS OPPOSED:

- (SB314/HB361) Septic Stewardship Act of 2018—Reduces funding in the Bay Restoration Fund (BRF) that helps fund upgrading septic systems.
- (SB926) Substrate Material for Oyster Planting—Would severely restrict the use of alternative substrate in oyster restoration. The oyster plantings in the Harris Creek Sanctuary show that alternative substrates like native rock are equally as successful as oyster shell in supporting a reproducing oyster population.



THEODORE ROOSEVELT

"Here is your country. Cherish these natural wonders, cherish the natural resources, cherish the history and romance as a sacred heritage, for your children and your children's children. Do not let selfish men or greedy interests skin your country of its beauty, its riches or its romance."

LYNDON JOHNSON

"To sustain an environment suitable for man, we must fight on a thousand battlegrounds... No one has the right to use America's rivers and America's waterways, that belong to all the people, as a sewer."



TIM TRUMBAUER

CHESTER RIVERKEEPER LOG

I live a hectic life. At home, my wife and I have four kids, three cats, one dog, and five acres to tend—I don't think I need to elaborate. As a Riverkeeper, I start off most days with a solid game plan, but then I get a call

about a rogue porta potty floating in the river or find out on short notice that I need to prepare testimony for important legislation in Annapolis. Through the beautiful chaos, I rely on lists to stay organized and productive. With that in mind, I want to share three lists about the Chester River and the efforts that ShoreRivers is taking to protect and restore our local waterways.

3 THINGS TO KNOW ABOUT THE CHESTER RIVER:

- 1 The Chester River is polluted from sediment and nutrients smothering life and creating de-oxygenated dead zones.
- 2 Most of the pollution in the Chester River comes from local land sources, confirmed by our extensive water sampling.
- 3 Restoration efforts in the Chester have been expanding and the river is slowly, steadily improving.

3 THINGS WE ARE DOING TO IMPROVE THE CHESTER RIVER:

- 1 **RESTORATION.** ShoreRivers has installed dozens of acres of wetlands and hundreds of acres of naturalized buffers on agricultural land in the watershed. These include a wetland and 10 acres of trees at Worton Park and Kent County High School, a 2,600-square-foot rain garden at Church Hill Elementary School that will filter water flowing into Southeast Creek and provide a wonderful educational opportunity for young students. We are in the process of installing a step pool system at the Gunston School that will stabilize an eroding gully and prevent sediment and nutrient pollution from entering the Corsica River. Collectively, ShoreRivers and its legacy organizations have installed 77 restoration projects that prevent nearly 32,000 pounds of nitrogen, 11,000 pounds of phosphorus, and 1.4 MILLION pounds of sediment from entering our waterways each year. And we are just getting started...
- 2 **ADVOCACY.** We advocate for policies and projects at the federal, state, and local levels that protect the

Chester River. Recent efforts include bills that will protect our forest resources, more adequately enforce environmental regulations, and ensure functioning septic systems are installed in the highest priority areas. We are also working hard to track, evaluate, and influence several high profile projects in our watershed, including a proposed new Bay crossing, the Four Seasons development project on Kent Island, and a proposed natural gas pipeline.

- 3 **SCIENCE AND MONITORING.** ShoreRivers and our Chester Tester volunteers monitor more than 50 sites in the Chester River watershed. We analyze the water for common indicators such as dissolved oxygen, nutrient pollution, sediment pollution, and pH. New in 2017, we also partnered with Swim Guide (app available at www.swimguide.org) to publish bacteria monitoring results at 13 popular swimming destinations, including Conquest Beach and Cacaway Island.

3 THINGS YOU CAN DO TO HELP THE CHESTER RIVER:

- 1 **BE A VOICE FOR THE CHESTER.** ShoreRivers has 3,500 members, and our united voice is an extremely powerful force for the Chester River and all of our waterways. Please contact your local, state, and federal representatives to support clean water legislation. Help us educate your friends and neighbors about the Chester River and water quality issues.
- 2 **BE RIVER-FRIENDLY.** Lessen your lawn area by planting native trees, grasses, and shrubs that provide habitat, prevent sediment pollution by holding soil in place, and absorb nutrient pollution. Eliminate lawn fertilizer, which adds to nutrient pollution by leaching into the river. Install rain gardens, rain barrels, and other features on your property. To learn more about any of the above, attend one of our river-friendly yard workshops. Contact our watershed manager Emily Harris (eharris@shorerivers.org) for more details.
- 3 **SUPPORT SHORERIVERS.** Your support is essential in our efforts to protect and restore the Chester River. I recently had the honor to testify in Annapolis in support of a bill that will strengthen our environmental regulations. I began with, "I'm Tim Trumbauer the Chester Riverkeeper and I am representing ShoreRivers and our 3,500 members..." That is an extremely powerful statement, and I can tell you our delegates paid attention. Thank you for supporting the work of the Chester Riverkeeper and all the great things we are doing together as ShoreRivers.

MILES-WYE RIVERKEEPER LOG



ELLE BASSETT

I am grateful and excited for the opportunity to serve as your new Miles and Wye Riverkeeper! I grew up on the Chesapeake, feeling most at home on its rivers, marshes, and beaches. After attending Washington College, I

quickly fell in love with the Eastern Shore and decided to make it my permanent home. I started with ShoreRivers (then Midshore Riverkeeper Conservancy) in 2012 as a Chesapeake Conservation Corps Volunteer. I stayed on as the Education and Outreach Coordinator, building our education initiative into a robust program that has now reached thousands of elementary and high school students. Along the way, I managed our oyster restoration program (through which we have planted over 100,000 oysters), regularly assisted our Riverkeepers, and obtained a master's degree in environmental education.

Reflecting back on my first few months as a Riverkeeper, I am better understanding and relishing what it means to have an uncompromising voice for my watersheds. Spending time on them, studying them, caring for them, has already led me to find more beauty in these local rivers than I ever imagined.

LOOKING AHEAD TO 2018, WE HAVE DEVELOPED A LIST OF MILES-WYE PRIORITIES:

POWER DREDGING

We are studying the issue of power dredging for clams in our waterways and plan to convene stakeholders to urge the state to adopt an appropriate plan to manage these important species.

SEDIMENT CONTROL

We have been monitoring sediment overflows connected to rain events at the Four Seasons Project on Kent Island and we are working with state officials to remedy the problem. This has led us to recognize that state and county sediment control regulations have not kept up with increased intense stormwater events, and we are developing an initiative to improve these policies.

MARYLANDERS GROW OYSTERS PROGRAM

This is a free program that directly contributes to more oysters in our rivers. We currently have about 80 growers on the Miles and Wye Rivers. Let's increase those numbers!



SUBMERGED AQUATIC VEGETATION (SAV) PROTECTION

The Miles River alone has seen a 400% increase in SAV in the past decade. Let's make sure those grass beds are protected and continue to grow! Join me in monitoring and protecting these vital Chesapeake habitats.

STUDENT STEWARDSHIP

The future of our rivers is in the hands of future generations. Let's make sure these students know and love the rivers like we do through outdoor education and stewardship opportunities!



PUMP, DON'T DUMP!

The pumpout boat is a free service offered on the Miles and Wye Rivers. Last season, our pumpout boat pumped 12,000 gallons of concentrated marine waste. Our goal for the 2018 season is 15,000 gallons!

Pumpout boat season begins May 4.

Fridays	4-7 p.m.
Saturdays	10 a.m.-4 p.m.
Sundays	8:30 a.m.-2:30 p.m.
Memorial Day (May 28)	9 a.m.-3 p.m.
Independence Day	9 a.m.-3 p.m.
Labor Day (September 3)	9 a.m.-3 p.m.

For service, call or text 410-829-4352; or VHF Channel 9

SASSAFRAS RIVERKEEPER LOG



CAPT. EMMETT DUKE

I am pleased to report that our merger into ShoreRivers has gone smoothly, and it is exciting and energizing to be working with a new team of topnotch professionals—scientists, policy advocates, educators, and three other

Riverkeepers. I am confident that, moving forward, we will make great advancements in bringing cleaner water to the Sassafras and Maryland's Eastern Shore.

Without a doubt, we will be **MAINTAINING AND NOURISHING THE RELATIONSHIPS WE'VE MADE** over the years with residents, boaters, marinas, business owners, and elected officials in Kent and Cecil Counties. As the voice of the Sassafras River, we will continue to grow in that capacity.

In the coming year, we intend to **CONTINUE AND EXPAND OUR SASSAFRAS INITIATIVES**—programs such as soil test workshops, rain barrel workshops, shoreline and roadside cleanups, and education programs to help local residents and visitors appreciate the value of a clean river.

With additional restoration expertise, we will **BUILD UPON OUR COLLABORATION WITH FARMERS AND LANDOWNERS** in our watershed, with whom we have completed numerous innovative projects—gully

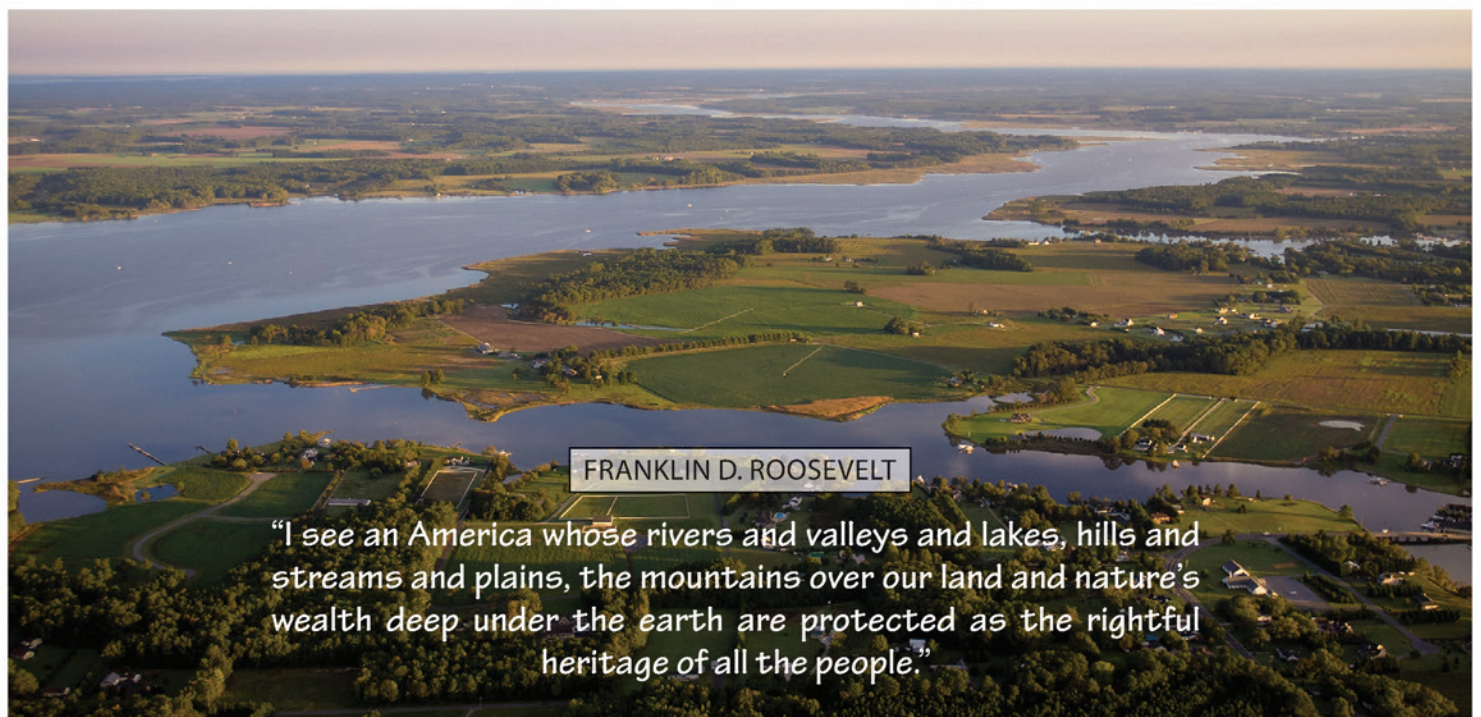
and stream bank restorations, treatment wetlands, and regenerative step pools, reducing sediment and nutrient encroachment into our waterways. One of our projects now underway, Swantown Creek, is featured in this newsletter!

This summer, we will make an even more determined effort to **ERADICATE THE INVASIVE WATER CHESTNUT PLANTS** that have plagued our creeks for over forty years. Working with the Maryland Department of Natural Resources, AmeriCorps, Chesapeake Conservation Corps, Delaware Nature Society, and many local volunteers, we will be out in kayaks, canoes, and small boats on many days to remove the noxious, harmful plants from the creeks along the river.

With enthusiastic, experienced advocates, ShoreRivers and our members will be **A FIRMER VOICE—3,500 STRONG** to express our concerns to elected officials at the local, state, and federal level.

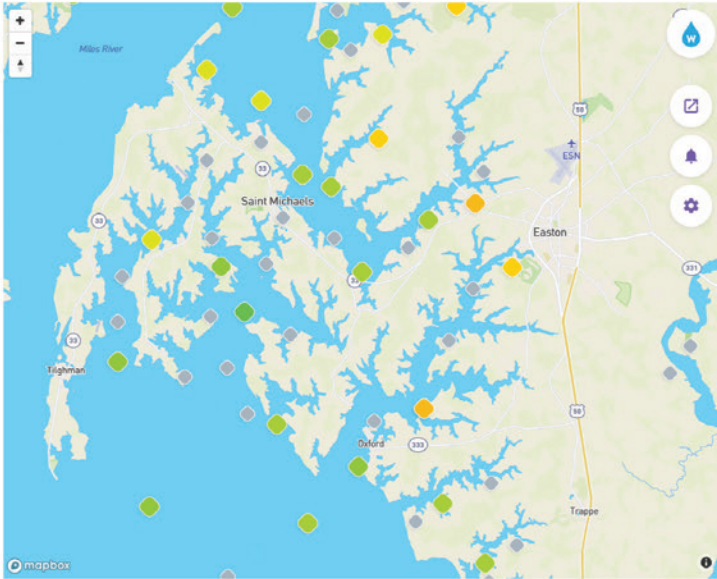
At ShoreRivers, we are passionate about clean water! We will need the support of all our neighbors in our combined watersheds. **BECOME A MEMBER, TALK TO YOUR FRIENDS ABOUT US, JOIN US AT OUR FUN AND INSPIRING EVENTS.** As a start, please mark your calendars and plan to join us on June 23 at our Summer Solstice Gala at Wilmer Park in Chestertown. I want our Sassafras contingent to make a huge showing!

Thanks. And I'll see you on the river.



FRANKLIN D. ROOSEVELT
"I see an America whose rivers and valleys and lakes, hills and streams and plains, the mountains over our land and nature's wealth deep under the earth are protected as the rightful heritage of all the people."

ShoreRivers' Digital Map RIVERWATCH



ShoreRivers is pleased to announce the launch of our online, interactive, digital map of contemporaneous water quality information, called *RiverWatch*.

Beginning this season, you can access Riverwatch on our website homepage. From here, you can select a watershed and then click on any of our 200 monitoring locations and view both historical and recent water quality data. RiverWatch will display the information that our Riverkeepers, scientists and citizen volunteers collect, along with trend lines, and scores. It will be updated regularly. Instead of having to wait nine months for a complete monitoring cycle to be analyzed, you can now be apprised of the health of each river or sub-watershed after each sampling trip during the season.

Water quality monitoring is a cornerstone of our work. We use the data to track trends in water quality, to identify and mitigate pollution sources, to support our broad policy advocacy initiatives, and to strategically prioritize restoration efforts. Our grade analysis is based on protocols developed in collaboration with the Maryland Tributary Assessment Coalition. Historically, we have disseminated this data to the public annually in our River Report Cards. Through RiverWatch we are now able to provide this outreach and information in real time.

THANK YOU

to Chesapeake Commons for their significant contributions in creating and donating this innovative and customized platform on behalf of ShoreRivers as a pilot project for nationwide promotion. Once RiverWatch is tested and refined, it can have widespread application for similar organizations everywhere.

SHORERIVERS DEVELOPMENT PROGRAMS

Leave a Legacy of Clean Water



photo by John Hardie

Do you want to help ensure that future generations will be able to enjoy our beautiful Eastern Shore rivers? ShoreRivers' Planned Giving Program can help you strengthen your own financial future and help us protect and restore our rivers at the same time.

ShoreRivers is proud to partner with Mid-Shore Community Foundation to offer multiple avenues for one to leave a gift that will keep giving in perpetuity.

For more information, please contact Kristan Droter, Director of Development, at 443.385.0511 or kdroter@shorerivers.org.

ShoreRivers' BOAT DONATION PROGRAM



**PUT THAT UNUSED BOAT TO GOOD USE
BY DONATING IT TO SHORERIVERS!**

All proceeds will go directly toward supporting ShoreRivers' education, advocacy and restoration programs to protect our Eastern Shore rivers and the living resources that they support. If you would like ShoreRivers to conduct a boat donation assessment, please contact Kristan Droter at 443.385.0511 or kdroter@shorerivers.org.

SHORERIVERS PRESENTS



FRIDAY, NOVEMBER 16

COCKTAIL PARTY: 5 PM
AT THE TIDEWATER INN

FILMS: 7:30 PM
AT THE AVALON THEATRE



GROUNDSWELL

STATE OF THE RIVERS PRESENTATIONS

MILES, WYE & CHOPTANK RIVERS—St. Michaels
April 20, 5 p.m.
Keynote Speaker: Senator Chris Van Hollen Chesapeake Bay Maritime Museum

CHOPTANK RIVER—Cambridge
April 26, 5:30 p.m.
Keynote Speaker: Jay Lazar, NOAA
Robbins Heritage Center
1003 Greenway Drive

CHESTER RIVER—Chestertown
April 26, 5:15 p.m.
Keynote Speaker: John Seidel, Director of Center for Environment & Society
Washington College, Hynson Lounge

SASSAFRAS RIVER—Cecilton
May 3, 7 p.m.
Keynote Speaker: Nick DiPasquale, former EPA Director of Chesapeake Bay Program
Cecilton Fire Department

WYE & CHESTER RIVERS & EASTERN BAY—Grasonville
May 16, 6 p.m.
Chesapeake Bay Environmental Center

6TH ANNUAL SUMMER SOLSTICE

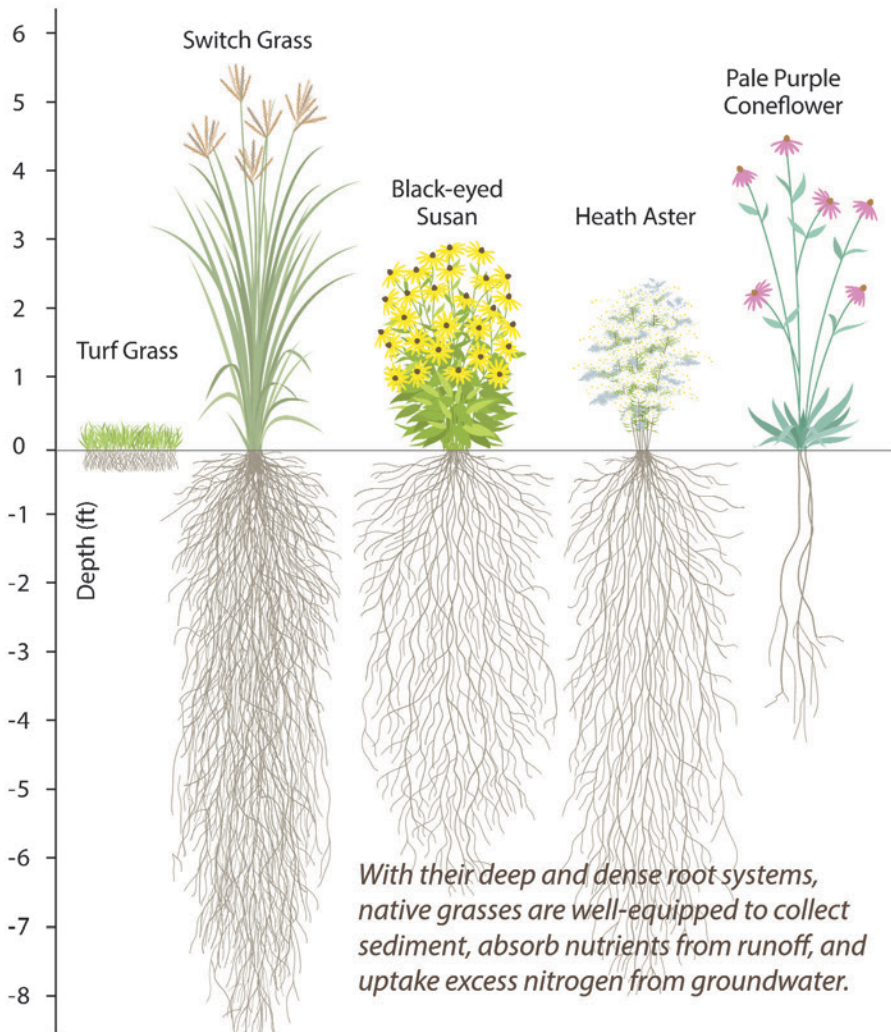


SHORERIVERS GALA
SATURDAY, JUNE 23, 2018, 6-10 P.M.
WILMER PARK, CHESTERTOWN

Enjoy live music and dancing
Refreshing cocktails from the open bar
Dinner by Magnolia Catering
Good company and exceptional auction

All money raised directly supports ShoreRivers' work for clean water.
Tickets and info: shorerivers.org

RIVER-FRIENDLY YARDS



THE FIGHT FOR CLEAN RIVERS STARTS RIGHT IN YOUR BACKYARD

Imagine your watershed with...

← LESS TURF GRASS

→ MORE NATIVE PLANT SPECIES

← LESS STORMWATER RUNOFF

→ MORE INFILTRATION

← LESS LAWN FERTILIZER

→ MORE RIVER-FRIENDLY PRACTICES

Yards that mimic the natural environment benefit local water quality and wildlife habitat.

Join ShoreRivers for a **RIVER-FRIENDLY YARDS WORKSHOP** this spring to learn more about what you can do to help your river.

Interested in hosting a workshop in your neighborhood? Contact Emily Harris at eharris@shorerivers.org or 410-810-7556 to learn more.

IN MEMORIAM ELIZABETH CAROL BROWN 1992-2018



Elizabeth was Midshore Riverkeeper Conservancy's 2015-2016 Chesapeake Conservation Corps Volunteer. She was dedicated to clean water, engaging others with their rivers, and serving as an environmental steward in every way. She brought enthusiasm and joy to every task. She was an esteemed colleague and a beloved friend, and we will miss her dearly. See you on the river, Elizabeth.

SHORERIVERS IS DEEPLY GRATEFUL AND THANKS THE DONORS AND

MAJOR FOUNDATION AND PROJECT GRANTORS

Cecil County Maryland
Chesapeake Bay Trust
Dock Street Foundation
Gray Charitable Trust
Gunston School
Keith Campbell Foundation for the
Environment Inc.
Kent County, Maryland
LaMotte Company
Maryland Dept of Agriculture
Maryland Dept of Natural Resources
National Fish and Wildlife Foundation
Queen Anne's County Maryland
Rauch Foundation
Rockefeller Family Fund
Schumann Foundation
Shared Earth Foundation
Sustainable Chesapeake
The Outdoor Foundation
Town Creek Foundation
US Dept of Agriculture

JOHN SMITH SOCIETY \$5,000 OR MORE

Anonymous
David and Nancy Balliet
BB&T
Steven and Julie Burselson
Theodore Carski and Janet Ruhl
Clayton Baker Trust
Robert Eisinger
Brice and Carol Gamber
Henry Greenewalt
Alan and Penny Griffith
Charlotte Hawes
Dan and Cindy Hayes
Nina Rodale Houghton
KELLY Integral Solutions LLC
Richard Marks and Amy Haines
Matthew Miller and Elizabeth Wehrle
Patagonia Works
RBC Wealth Management
Jim and Patty Rouse Charitable
Foundation Inc
Ken and Sue Shumaker
Alfred and Marty Sikes
Bruce and Carol Thompson
Watson and Susan Warriner
Waterkeeper Alliance
Daniel Watson and Brenda Stone
Peter Welling

RIVER STEWARD \$2,500 OR MORE

Bruce and Jenny Abel
Akridge Family Foundation
Alliance for the Chesapeake Bay Inc
Michael and Patricia Batza
William and Meta Boyd
Louisa Duemling
William Goss and Greg Moore
Robert M. Hewes
John G. & Jean R. Gosnell Foundation Inc
George Kreshock
Mark and Beverly Lewis
Alison MacKenzie
Brooke McLean
Bill and Doris Nielsen
The Ocean Foundation
Jeff and Gail Russell
Brennan and Patricia Starkey
Peter Stifel and Penelope Dwyer

Warren and Liguori Tewes
Richard and Beverly Tilghman, Jr.
Ron and Anne Walker
Waterkeepers Chesapeake

RIVER GUARDIAN \$1,000 OR MORE

Anonymous
Agency of Record
William and Jane Anderson
Gary Beauchamp
Benson & Mangold Bay Street
Bicycling magazine
Sherrylyn Black
Blessings Environmental Concepts
Richard and Ellen Bodorff
Boeing Company
David and Katherine Bradley
David Bramble Inc
Marian Brown
Bryan Brothers Foundation
Robert Bryan
John and Terry Burke
Tyler and Debbie Campbell
Mary Ellen Campbell
Chesapeake Bay Maritime Museum
Chesapeake College
Brian Chick and Sueann Hall
John and Peggy Christie
Clark Construction Group LLC
Steve and Linda Clineburg
Joseph and Genevieve Coyle
Frank and Alyce DeGennaro
Delaplaine Foundation Inc
Diamondback Bicycles
Marshall and Robin Durston
Georgiana Evans
Gerald Fairbanks and Jean Rhian
Tom Fisher and Kalla Kvalnes
Spence Foscue and Liz Bryan
Caroline Gabel
Myrton and Mary Bee Gaines
Marie Garfield
Ed and Cindy Giambastiani
Morton Gibbons-Neff
Gillespie & Son Inc
Gunther McClary Real Estate
Steve Hamblin
Edgar Hatcher
The Hatcher Group
Christian Havemeyer
Loring and Charlotte Hawes
Gates Hawn
Benjamin Heilman
Helena Hermes and Erik Walter
Donald F. and Darby Hewes
The Hill Group at Morgan Stanley
Wayne and Mary Hockmeyer
Matthew Hook
Jeff and Beth Horstman
Robert and Gayle Ingersoll
Tim and Kristin Junkin
John and Dionna Knight
Jeanne and Eric Knox
David LaMotte
Michael Lawrence
Larry and Lois Lindsley
Llandaff Family Foundation
Thomas and Lisa Lloyd
Eugene Lopez and Mary Revell Lopez
Jere Lucey
Morgan and Fiona Lum
Thomas Mack
Andrew and Lyn McCormick
Howard and Mary McCoy

David and Anne Menotti
E. Kent and Carole Merkle
Russell and Barry Minkoff
Charles Monet and Diane Rohman
Michael and Wendy Moore
Nanticoke Watershed Alliance
Edward Nielsen
Outlaws Unlimited
Lee and Jenny Owen
Richard Owen and Paula Wordtt
Gail Owings
Peter Pappas
Patriot Cruises
David and Sharon Perry
Timothy and Lynn Peters
The Pew Charitable Trust
Vic and Patricia Pfeiffer
Blaine and Susan Phillips
Terry Rabinowitz
Ramseyland
Blyth Reynolds and Mary Anne Shea
David and Susan Roberson
Ross Linderman
Robert and Mary Saner
George Sawyer
David Schmickel and Amy Kimball
Ford and Marilee Schumann
Scossa Restaurant & Lounge
Sue Shawhan
Joanne Shipley
Kevin Shumaker and Jack Bryant
Silver Hill Farm
Jennifer Stanley
Straughan Environmental Inc
Peter and Sally Sweetser
Mary Ruth Talley
James Trumbauer
Ellen Uzelac
Michael and Lisa Vadasz
John and Ellyn Vail
Buck Waller and Michael Hash
Colin Walsh and Carolyn Williams
Jeffery Warden
The Webster Group
Raymond Wiacek, Jr. and Nancy O'Connell
John and Judith Willock
Anna Wolgast and Ed Hugler
James and Chris Wright
Brian Wruble and Kathleen Bratton
Jay and Lisa Yerkes

SUSTAINING MEMBER \$500 OR MORE

Myron and Caroline Arms
Bay Imprint
Bay Pediatric Center
Louis and Madeline Bell
Shelby and Francesca Blythe
Maura Bollinger
Michael and Ella Bracy
Omer Brown and Sandy Cannon-Brown
Patrick Caldwell and Rebecca Rimel
Nick and Margaret Carter
Chesapeake Environmental
Communications
Brett Clifford and Elise Butler
Peter and Abigail Coyle
Cross Street Realtors
H. Lawrence and Wendy Culp
Jack and Ann Davis
Joseph and Jacqueline Doddridge
Buck Duncan
Joseph and Patricia Dunn
Earth Data Inc
Easton Utilities Commission
Stuart Elsborg

Mark Fabere
Sara Fauquier
Mike Fleagle and Carol Crutchfield
James Ford
Stephen and Audrey Forrer
Francis Hickman
Frederick W. Richmond Foundation Inc
William and Nancy Frederick
Jack Garson
Keith and Lisa Marie Ghezzi
James and Erin Gillespie
Michael and Dayna Goldsmith
Granary Restaurant
Linda Groves
Paul and Rodanthe Hanrahan
John Harrington
James and Pamela Harris
Jerry and Bobbi Harris
Paul and Jayne Heckles
Henry F. Sears Foundation
Trey and Cheryl Hill
Penney Hubbard
Mary James Hurley
Monica Irmiler
Joseph and Carol Jelich
Judge Yachts Inc
George and Carol Z. Kaplan
Doug and Pat Kern
Jeffrey and Bethany Kern
Jeffrey and Laurie Kirby
Paul Klinedinst
KRM Development Corp.
Robert and Linda Leigh
Pam Maher
Thomas and Jane Marvel
Don and Jean McDougall
Winifrede Ottinger
Painted Sky Alpaca Farm
William Pearse and Margaret Donovan
Richard and Sharon Piech
Thomas Pierson
Elizabeth Pupke
Radcliffe Corporate Services Inc
Richard and Phyllis Radlinski
John and Marcy Ramsey
Resource Restoration Group LLC
John H. and Margaret K. Riehl, III
Bruce and Alice Rogers
J. Douglas Rollow
Thomas and Frances Roosevelt
Peter and Megan Rosan
Paul and Cheryl Schlenker
John Smith and Mary Tydings
Star Democrat
Kevin and Mary Beth Sullivan
Talbot County Maryland
Talbot Preservation Alliance
Carl and Nancy Tankersley
John and Kimberly Thacker
The Brewer's Art
Ferd and Liz Thun
Benjamin and Paige Tilghman
Matthew and Joanne Tobriner
Towers Concrete Products Inc
Sumter Travers and Barbara Catherwood
University of Maryland Foundation
Kirk and Laura Wade
Jonathan Wasserman
Clifton West
Pamela White
Louise Widdup
Randy Williams
David and Debbie Willse
Peter and Susie Wilmerding
Gary and Sue Wingate
Wye Gardens LLC
Alan Zuckerman

SUPPORTERS OF OUR THREE LEGACY ORGANIZATIONS DURING 2017

FAMILY MEMBER \$100 OR MORE

Anonymous	Anne Charles	Fleetwood, Athey, MacBeth & McCown Inc	Alden and Corrie James
Jeff and Leslie Adelman	Chateau Bu-De Vineyard & Winery	Robert and Constance Fletcher	Bayly Janson-LaPalme
Adkins Arboretum	Douglas Chavis and Paula Ellman	Bill and Barbara Flook	Barbara Jefferson
Mark and Nielly Alderman	Chesapeake 4-H Club	Flow Salon LLC	Jennifer Jefferson
Mindy Aldridge	Chesapeake Bank and Trust	Robert Fogarty	Bob and Karen Jenks
Syed Ali and Ranna Hassan	Choptank Heritage Trail Inc	George and Anne Foss	Lindsay Johnson
Robert and Judith Amdur	C-JAM Yacht Sales	Chuck and Linda Foster	Mark and Melissa Johnston
Tina Anderson	Doug and Barbara Clark	Gary and Diane Foster	Charles Jolly
Patrick and Laura Anderson	Iris Clarke	John Foster	Gregory and Joyce H. Jones
Stephen and Cynthia Anderton	David and Tamara Clements	Rebecca Frederick	John and Kimberly Kaestner
Angelica Nurseries Inc	Muriel Cole	Robert Fry and Judy Gifford	Mark and Christine Kamon
Anthony's Flowers & Landscaping	Albert and Sandra Collins	Elliot Fuhrman	Thomas and Susan Kane
George and Margaret Anzalone	James Connolly	James Fuller and Catherine Porter	Scott and Ann Keep
Stan Appel and Jeanne Bond	Priscilla Cooper	Steve Funderburk	Doreen Kelly
Hank and Joanne Asbill	Kevin and Pat Cornell	David Futransky	Judy Kelly
Aspen Institute	Wendell Coslett	Colleen Gabrish	Kevin Kelly
Atlantic Security Inc	Gene Counihan	Stephen and Diane Gadowski	Edward Kemp
Bill and Joan Bailey	Paul and Kate Cox	Gus Gartner	John and Lorraine Kennedy
Margo Bailey	William Creager	M. Douglass Gates	Kent Soil & Water Conservation District
Bob and Cheryl Baker	Cross Street Food & Garden	Linda Gaydos	Kentmore Park Improvement Association
Pamela Baker	James and Betty Crothers	Lewis Gayner	Kent and Carol Kerbel
Richard Balaban	Roy and Judy Crow	Michael Gehringer	Ron Ketter and Janet Mackey
Michelle Baldwin	Richard and Joan Crowley	Ken and Wendy Gibson	Fred and Lynne Kielhorn
Roger and Rosemary Baldwin	Thomas and Helma Curtiss	Judy Gifford	Robert and Norma Killebrew
Dennis and Molly Balog	Bill D'Alonzo	Paul Gilmore	Kingstown Farm, Home & Garden Inc
Jack and Teri Balog	Craig Damon and Lollie Sherry	Robert Gilmore	James Kirkpatrick
Steven Bartelt	Dann Marine Towing LLC	Louise Goddard	Mike and Julie Klapproth
Lindsay Batcheller	Robert and Heather Dann	Jeff and Linnea Goddess	Greg Klein
Frances Bayard	Gary and Barbara Dathe	Charles Goebel and Catherine Joyce	Ted and Gretchen Knowles
Bill Belding and Margel Highet	Christopher Davis	Jack and Leah Goebel	Robert Koenke and Judy Price
Harrington Bell	Helen Davis	Great Eastern Properties	Judith Kohl
Paul and Audrey Bennett	Jennifer Davis and JQ Forrest	Howard and Debbie Green	Verne Kohl
Gary Bensen	Richard Dean and Sherry Gerber	Elizabeth Guevara	Jeffry and Susan Komins
Gordon Benson	Mike Deane and Elizabeth Westcott	Allen and Sara Kessler Guttman	Emily Korber
Christyne Berzsenyi and Philip Beachy	Deep Roots Inc	Eric Hadaway	JoAnn Kowalski and David H. Sumi
Betterton Still Pond Lions Club	Anthony and Catherine D'Elia	Meredith Hadaway	Sandra Krastel
Kevin Beverly	Caulley and Alexandra Deringer	Paul and Susan Haddaway	Steve and Holly Krinsky
Mel and Liz Billingsley	Alexander and Margaret Sue Dick	Mitch Hager	Helen Krom
Lex Birney	Frank Digialleonardo and Cheryl Huyck	Jill Hansen	Clarence and Pattison Kuntz
Cathleen Blanton	Linda Blanchfield Dillow	Harald and Nancy Cordes	Glen Lachenauer
Stanley Blazejewski	Nick DiPasquale	Mike and Isabel Junkin Hardesty	T Lake
William and Posey Boicourt	Carl and Nannie Doll	Katherine Hardiman	Krista Lamoreaux
Mary Bollinger	Graham Donaldson	Karl Kirke and Linda Harper	Richard and Virginia Lance
Roger and Jane Bollman	James Donohoe	Nancy Harrington	Bill and Barbara Lane
Christine Boone	Richard and Barbara Doughty	Bruce Hartwig	Richard Lankford
Richard Boporff	Craig and Karen Douglass	Frank and Lisa Hatheway	John LaPann
Sarah Boynton	Dr. Computer	Chip and Patty Heaps	John and Jean Larson
Walter and Mary Ellen Boynton	Michael and Carol Droge	Patti and Dave Hegland	Nancy Latham
Joe and Sue Bredekamp	Michele and Christina Drostin	Peter and Shelley Heller	Susan Leavitt
Linda Brenninkmeyer	Pam Duke	Peter and Leigh Henry	Debra Legg
Robert Brewer	Marilynn Duker	Clem Herbst	Judy Leigh
Earl Brian and Molly Burgoyne-Brian	Chris Dungan	Kenneth and Patricia Herlihy	Tom and Courtney Leigh
Marion Bricker	Broughton and Ray Earnest	Heron Point Resident Association	Charles Lerner
Brooks Bridges	Eastern Shore Animal Hospital	Ben Herr	Pete and Mariana Leshner
Bright Helmstone Farms Inc	William Eaton	Diane Herrin	Ronald and Annabel Leshner
Brilliant Title Corporation	Martin Eby	Rebekah Hock	Donald and Patricia Lewers
Raymond and Virginia Briscuso	Ronnie Edelman	Bob and Julie Hockaday	Abby Lewis
Bobbi Brittingham	Jack and Sue Edson	Bob and Elizabeth Hodge	Catherine Liebl
Richard Brooks and Margaret Hardy	Thomas Edwards	P. Trams Hollingsworth	Jonathon and Charlotte Lillard
Bruce and Barbara Brown	Eric and Susan Eichler	Grace Hopkins	Tom and Jane Lipscomb
Barry Brunett	Page Eisinger	Robert and Marilyn Horne	David Lloyd and Andrea Wollock
Richard and Vicki Budden	Robert L. Eisinger	Martha Horner	David and Kelly Long
Scott Budden	Roger Eisinger	Andrew and Ann Horsey	Robert Love
Drew and Cindy Buniski	John Ellis	William Hough	John Lynch
David and Cindy Burns	Laura Ellis	Elizabeth Houghton	Clark and Ann MacKenzie
W. Eric and Elizabeth Burton	Jenifer Emley	Darlene Housley	Erney and Margaret Maher
Dan and Kathie Buyse	Rob and Suzanne Kilby Etgen	Peter and Carla Howell	Erney Maher
Giancarla Calzetta	Preston and Sarah Everdell	Brandon Hoy and Brook Schumann	William Manders
James and Mary Campbell	Deborah Facciolo	Charles and Marilyn Huddleston	Ken and Leslie Mann
Michael Campbell	John Fairhall	Geoffrey and Sue Huguely	Harry and Christa Whallen Marcy
Thomas C. and Susan Cardero	Winter Family	David and Susan Hutton	George and Jane Markham
John Carroll, Ellicott City	Patrick Fauquier	Wendy Ingersoll-Perry	Dylan Marks
John Carroll, Galena	Joseph and Marjorie Fick	William and Gerri Irish	Mark Mason and Robin Cantor
Creston and Carol Cathcart	Fidelity & Guaranty Life	Joseph Irr	Albert and Carla Massoni
Peter Chadwick	Tim Finn	Izaak Walton League Mid-Shore Chapter	John and Jeanne Mate
	Jack and Maria Fischer	Neal Jackson and Sandra Willett	Jeanette Mathias
	Gerry Fisher	Jason Jacobs	Anastasia Matijkiw
	Joan Flaherty		



Larry and Linda Matlack
Bryan and Susan Matthews
Ann McAllister
Neil and Bess McAneny
William and Margaret McConnel
Andrew and Elizabeth McCown
Bruce and Sally McCoy
Patrick McCoy
Kevin McFadden
John and Jennifer McGahren
Beth McGee and Ann Wearmouth
Trish McGee
Marguerite McGillin-Greve
Jeffrey McGuinness
Charles and Pamela McPherson
Roy and Molly Mears
Alexander Menotti
Richard and Jan Mest
Chuck Metzger
Jack and Jill Meyerhoff
C. Michael and Mary Scheeler
Kenneth and Julia Miller
Tui Minderhout
Carla Mitchell
David and Elizabeth Mitchell
James Mitchell
Susan Montgomery
Robert and Patricia Morgan
Warwick and Bronwyn Morison
Henry Mortimer
Donald Munson
Katherine Murphy
Rebecca and Katherine Murphy
William and Judith Murwin
Stephen and Diana Mysliwicz
Mark Newman and Debra Silberg
Susan Newton-Rhodes
Pamela Nichols
Doug Nicholson
Matt Nielsen
Rob and Ceci Nobel
John and Pembroke Noble
Eric Nordberg
Edward L. and Pamela Norwind
Edward Novak
Michael and Katherine O'Brien
OBUS Music/Victoria Vox
Dennis and Georgia Ojard
Matthew and Nancy Olcott
Thomas O'Neill
Greg Ossont
Francis and Courtney Otenasek
Olga Owens
Rick and Diane Owens
Tom and Ginny Parker
Bob and Marilyn Parks
Floyd Parks
William Parshall II
Courtney Pastrick
William Pavan and Rebecca Read
William Peel III
Michael Pelczar
Marguerite Pelissier
Barrett Penan
Laurie Pence
Peoples Bank
Thomas Sergeant Pepper
Carmen Perry
Charles and Elizabeth Petty
Charles and Shirley Phillips
Bruce Phillips
Terry Phillips and Jennifer Madans
Pixel Print & Post
S. Jay Plager
Taylor and Will Porter
Bruce and Kinsey Potter
Joyce Purcell
John Pyne, Jr.
Christopher Quaglino and Cynthia Demarest

Ellen Rajacich
Bob Ramsey
Ted Ramsey and Catherine Brooks
Jane Randall
Melvin Rapelyea
Mary Restifo
Frank Rhodes Jr.
RHYC Sailing School Inc
George and Lucy Richards
Hans Riemer
Ivette Riera Salarich and Richard Furneisen
Brad and Kim Righi
Ira and Edgra Ringler
Peter and Linda Riondet
J. Barbour Rixey
Hanson and Linda Robbins
Gary and Nancy Robson
Brian Roche
Paul and Susan Rohrkemper
Nancy Rosan
Dennis and Sandra Rosen
Rupert and Cynthia Rossetti
Ron Rothman and Robin Stricoff
Robert and Kathi Rottiers
William and Mary Jo Russell
Jennie Russell
William Russell, Jr.
William Russell
S.E.W. Friel
Kenneth and Virginia Sappington
Murray and Susan Sarubin
Sassafras Harbor Marina LLC
Tom Scatchard
Teresa Schaefer
John and Beverly Schantz
David Scharff
William and Wendy Schickler
Friedrich and Anita Schmidt
Jim and Denise Schreiber
John Schreiner and Heidi Wetzel
Lawrence Schroth
Robert and Linda Schuerholz
Brook Schumann
Sarah Schut
Eric and Kathy Schwalm
Timothy Schwartz
James and Linda Scoggins
Andrew Scott
James Scott and Lisa Witomski
Jane Scott
Philip and Charlotte Sechler
Bill and Janis Seegar
Dave and Mary Segermark
Stephen and Jane Selden
Steve and Rose Senings
Antoinette Seymour
Robert Shade
Steve Sharkey
Fannie Shenk
Frederic Sherriff
Chuck and Chris Shivery
Shore Orthopedics Inc
Shore United Bank
William and Donna Short
Judith Showalter
Jason Shumaker and Paul McLoughlin
Michael and Sherry Shupp
Jennifer and Brandt Siegel
Robert Simmons
Doug and Kay Slocum
Nick Smiley and Elizabeth Williams
David Smith
Edgar and Andy Smith
Ingram Smith
Jeffrey Smith and Kathleen Murphy
Joseph and Ann Smith
Kurt and Beverly Smith
Lawrence Smith
Lindsley Smith
Lon Smith

Richard Smith
Hutch Smith
Terry Snyder
Solar Energy Services
Robert Sommerlatte
Donald Speakman
Geraldine Speer
Elizabeth Spence
Sprout
Ronald and Lauren Staines
Larry Stanton
Starkey Foundation
Joseph and Perri Lee Stella
Marty Stetson
Anne Stevens
Thomas G. Stevenson
Daniel Stine
Jon Stine
Joseph and Jean Stock
Stephen and Patricia Stockwell
Stoneton West LLC
Richard and Ginny Story
Bill and Mary Sullivan
Connie Sullivan
Owen and Julie Susman
David Sutton and Deborah Bennett
Richard Svoboda
Marilee Talley and Paul LaRocco
Mario and Elaine Tama
Tappahanna Creek Farm
Evan Thalenberg
Christopher Everett
Donald and Karen Thibeau
Jerry, Nelda and Larisa Thomas
Bob Toomey
Town and Country Wine & Liquors
Albert Townshend and Victoria Cadby
Rolph Townshend
Tri Gas & Oil
David Trumbauer
Timothy and Katie Trumbauer
James and Cynthia Tuite
Paul Tukey
Michael and Jen Twining
Stanley and Mary Urbanik
Bob and Lorraine Valenti
Robert and Mary Van Fossan
Vanguard Matching Gift Program
Anne Vansant
Charles and Elizabeth Vaughn
Frank and Janice Venuto
Van Vogel and Evelina Erickson
Charles and Nancy Voorhees
John Wagner
Robert and Rebecca Wagner
Philip Walker and Cheryl Tritt
Robert and Deborah Walkup
F. Joseph Warin and Julie Lansaw
Ronald and Lucille Weber
Wickes Westcott
Ben White
Willard Agri Service of Lynch Inc
Dawn Willey
Greg Williams
Randall Williams, Sr. and Alice Williams
Thomas and Mary Williams
Ron and Carolyn Willis
Karen Willis
Reed and Joanne Wills
Joan Wise
Gary and Jennie Witkin
Robert and Janet Witter
Steven Wolfgang
Mary Wood
Michael and Eugenia C. Wootton
David and Diane Wright
David and Lois Wye
John Young
John and Sissy Yowell
Ed and Joan Zellers
Howard Zwemer

INDIVIDUAL MEMBER \$35 OR MORE

Richard Acuti
Paul Allen
Anthony Amabile
Amazon Smile
Pierce and Molly Anderson
Elizabeth Anger
Tom Arnold and Sandy Boyd
Margaret Atterbury
Jim and Judith Baker
Margaret Barnes
Ellen and Karl (KJ) Bassett
Michael Beal and Annie Ewing
Lauren Beausoleil
James Beck
Ernest and Janet Behrens
Catherine Beise
Dick and Sandy Bemis
Bennett Point C Landscaping
Bernard Bennington
Lawrence and Susan Blount
Tim Bond
Warren Bornhoeft
Neil W. Brayton
James and Nancy Bricker
Albert W. Briggs
Sam and Jacki Brinton
Deborah Brobst
Charles and Margaret Brooks
Kitridge and Joanne Buritsch
Julie Burke
John Butler
John and Kathryn Byrnes
William Cameron
John and Roberta Carey
Maria Caro
Jordan and Nuala Carpenter
Ed and Karen Cartwright
David Caso
David Cavanaugh
Jonathan Chace and Evelyn Baskin
Megan Chapman
Elizabeth Christhif
Kathleen Clendaniel
David Coffey
Leo Cohn
Paul Coleman
Paula Conoscenti
Cathy Cooper
Leland and Alice Cory
Joan Cox
Mark Cozy
Frank and Barbara Creegan
Larry Crew and Linda Hague-Crew
James Dafnis
Kathryn Dahl
Leona Dalton
Charles Darrell
Ruth Davis
Cameron Kim Dawson
Joseph and Linda Dawson
Deerfield Farm
Rosario and Constance Del Nero
Kees and Jennifer deMooy
John Dent
Gregory Derby
Tom and Nancy DiAngelo
Raymond and Patricia Diedrichs
Matthew and Dana Diefenbach
Joe and Faith A. Dobrenski
Thomas Draper
Eugenie Drayton
Jamy Duckworth
Emmett and Diane Duke
Philip and Linda Dutton
Marc Dykeman
William Eaton
Ned Egan
Charles Elkins
Joe Elliott

Willard Engelskirchen and Anne L. Pilet
 Kathy Englar
 Carolyn Ettari
 Tom and Sonja Eveslage
 Helen Fauquier
 James Fauquier
 Fellows, Helfenbein & Newnam
 Benjamin Fertig
 Thomas Fisher
 Mark Foley
 Gayle Folger
 Karen Footner
 Jerry Friedman
 Carl Gallegos
 Garden Club of the Eastern Shore
 Eddy Garrido
 Ethel Gates
 Maren Gimpel and Dan Small
 Gary Gladstone
 Suzy Glucksman
 Myron Goff
 Nelson and Marcia Goldberg
 Kenneth Goldsmith
 Robert and Michele Goodson
 Gordon Croft Foundation
 Edmund and Veronica Gordon
 William Griffin
 Anthony Gubler
 Brian Gullett
 Suzanne Gutting
 Jonette Hahn
 Peter and Susan Hale
 Linda Hall
 Elizabeth Hammond
 Anna Harding
 Jamie Harms
 Hunter Harris
 Harry R. Hughes Center for Agro-Ecology Inc
 Wesley Heilman
 John P. Hellwege
 Kimberly Hernandez
 Terrance and Martha Higgins
 David Hill
 Elizabeth Hogan
 Gloria Holland
 Nancy Holland
 Brad Hollomon
 Joseph Holt
 Ted Hornaday
 Stephen and Barbara Huntoon
 C.A. Hutton
 Barbara in den Bosch
 Carol Ingersoll
 Albert Ishkanian and Virginia Schrenk
 Gayle Jayne
 Stephen Johns
 Rod Johnson
 Wendell Johnson
 Tom and Jennifer Joseph
 William and Linda Joyce
 Steve Karlow
 Parker and Sharlene Keen
 Michael Keene
 Ashton Kelley
 Bob Kelly and Sarah Ramsey
 Susan Kelly
 William and Barbara Kelly
 Deryl Kimball and Sally James
 Michael Kline
 Norman Klug
 Malcolm Kram and Mark Zwanger
 J. Michael Kramer
 Jay Krosnick
 Martin and Kelly Lalor
 Barbara Lamphere and Rick Bisgyer
 James and Diane Landskroener
 Amanda Larkin
 Charles and Leslie Leaver
 Jenny Lee
 Tony and Ellie Leigh

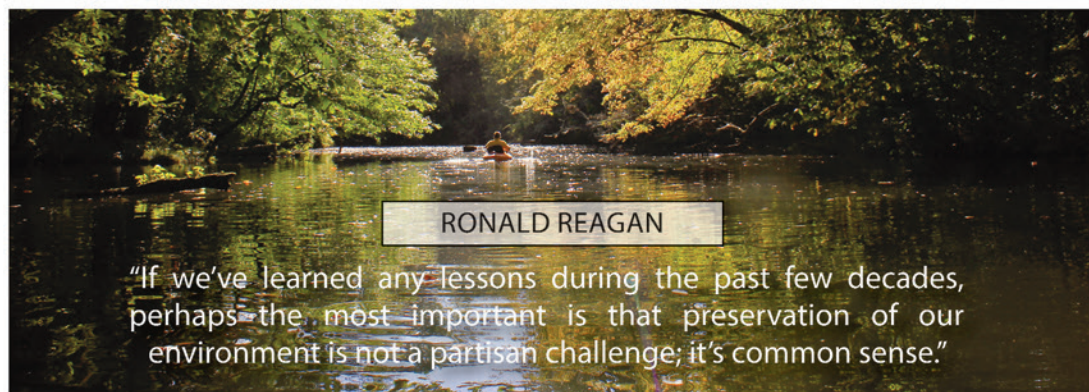
Karl Lemp
 Daniel Lessard
 John Lewis
 Marc-Antoine and Andrea Lombardini
 Scott Loveless
 Larry Lyons
 Gene and Fran Mackie
 James Malaro
 Dennis Martin
 J. Sperling Martin
 Ann Marvin
 Lynn Mason
 William Mason
 John and Diana Mautz
 Mike and Naomi McCafferty
 Gerald McDonald
 Paul McDonald
 James McDonnell
 Trudy McFall
 Paul and Floria McGuckian
 Peter McLean
 Will and Louise Merriken
 C. Michael and Karen Stralkowski
 Robert Middleton
 L. Evan Miles
 Pete and Riley Miller
 Frances Miller
 Judy Miller
 Thomas Miller
 Ellen Minnick
 Deborah Mizeur
 James Mourlas
 George and Patty Mowell
 James Mullin
 Ann and John Murray
 Nancy Hammond
 National Aquarium
 Nancy Neely
 George Norberg
 Pamela North
 Krista Northup
 Doug Olsen
 Beale and Linn Ong
 Tom Orem
 Teri Overington
 Oxford Garden Club
 Rick Palla
 Phil and Jeannette Parish
 Peter Paul
 Victor and Patricia Pfeiffer
 John Pinney and Donna Cantor
 Gregory Pokrywka
 Glenn and Beverly Porter
 Jeffrey Porter
 Elselore and Angela Pretzler
 Prospect Bay Country Club Kayakers
 Prospect Bay Garden Club
 Peter Purcell
 Joseph and Pat Quinlan
 Cynthia Ramsey
 Patrick Randolph
 Virginia Rankins
 Heather Ransom

Richard Raphael
 Gale Rasin
 Robert Reinbold
 Stan Rempuszewski
 Frances Reynolds
 Richard Riggs
 William and Margaret Robinson
 Robert and Patricia Rose
 Jan Rosen
 Bonnie Roth
 Teena Ruark Gorrow
 Jim and Aldona M. Rubillo
 Thomas and Mary Ryan
 Sassafras River Market
 Cynthia Saunders
 Linda Sawczyn
 Paul and Lisa Scharr
 Francis and Evelyn Schaubert
 Walter Schleich
 Edward Schmidt
 James Schuessler
 Bob and Sue Scofield
 John and Liz Seidel
 Dana Semmes
 Louise Shearer
 Sherwin-Williams Company
 Thomas Sisk
 Austin Smith
 Karen Smith
 Phillip Staller and Karen McCullogh
 Bruce and Jeanne Stevenson
 Steve and Suzon Strack
 Judy Strasser
 Richard Swanson
 Talbot County Garden Club Inc
 Tom Tate
 William Taylor
 Scott Thomas
 Harry and Rosalie Tillman
 Georgette Toews
 Larry Toth
 Howard Townsend
 Barry Trefz
 Susan Trionfo
 Nancy Trippe
 Doug and Susan Uhl
 Richard Updyke
 Dawn VanGrin
 Justin Varga
 Leo Vollmer
 Bill Walczak
 Myron Dow Walker
 Joseph and Tamra Walton
 Amy and Rob Warner
 Ted Waugh
 John Wells
 Steve and Robin Westre
 David White
 Grenville Whitman
 Frank Whittington
 Scott Williams
 Richard and Karen Wilson
 Sharon Wimbish

Donald and Sandra Winquist
 Howard and Caryl Winter
 Richard Wirtz
 Stephanie Wooton
 Lee Yerkes
 Calvin Yowell
 Greg Zimmerman

SUPPORTER

Christopher and Sandra Arnold
 Randy and Judith Barnes
 Gene Beall
 David Bender
 John Besse
 Christopher Blum
 Rory and Mary Brett
 Jeffrey and Colette Bright
 Drew Brown
 Cap Chenoweth
 Susan Claggett
 Suzanne Coleman
 Elizabeth Crabtree
 Richard Crane
 Kara Crissey
 Olin and Catherine Davis
 Rita Della-Rocca
 Denise DeOrio and Gail Raty
 Carol deWet
 Michael Drennan
 Sherry Farrell
 Jeff and Kate Fones
 James Frees
 Mary Brigid Frye
 Julie Gilberto-Brady
 Edgar and Sally Graeber
 Marguerite Hannon
 Chip Heartfield
 Harvey Jackson
 Linda Jones
 Linda Keevican
 Michael Koval
 Jeffrey Krull
 Brad Kurlancheek
 Captain Clay Larrimore
 Web and Sharon Lippert
 Norm and Lynn Marie Mead
 Robert and Adele E. Meredith
 Robert Messina and Ellen Kelly
 Robert and Janet Miller
 Wolfram Milz
 Terry and Marilyn Overton
 Susan Paolini
 James Pierson
 Cindy Quinn
 Merritt Rhoad
 Shari Rosenberg
 Brenton Smith
 Paul and Margaret A. Soentgen
 Laura Spies
 Thomas and Kathleen Stewart
 David and Jo Verrill
 Herbert Wilkinson





NON-PROFIT ORG.
U.S. POSTAGE
PAID
EASTON, MD
PERMIT NO. 94

SHORE RIVERS

Eastern Shore Conservation Center
114 S. Washington St., Suite 301
Easton, MD 21601

SAVE THE DATES

CHESTER RIVER SUMMER SOLSTICE GALA

June 23, 6 p.m.

Wilmer Park, Chestertown

Music, food, drinks, live and silent auctions!

RIDE FOR CLEAN RIVERS

September 16

Chesapeake College, Wye Mills

*Ride 25, 35 or 62 beautiful miles with rest stops,
SAG support, numerous teams! Enjoy lunch and
music after your ride. rideforcleanrivers.org*

WILD & SCENIC FILM FESTIVAL

November 16

5 p.m. Cocktail party at Tidewater Inn

Cocktails, food, silent auction

7:30 p.m. Films at Avalon Theatre

TOUR THE SHORE ADVENTURE SERIES

Get out on the water with Friday kayak trips on local waters...

There is no better view of our rivers than seeing them by boat! Enjoy expertly-guided tours along some of the most scenic paddles on the Eastern Shore. ShoreRivers has limited kayaks to rent, or bring your own. For more details visit the Events page at shorerivers.org or contact Suzanne at 443-385-0511 or ssullivan@shorerivers.org.

May 18 Tuckahoe Paddle from Hillsboro

June 22 Cambridge Creek Heritage Paddle

July 27 Wye Island Paddle and Old Forest Hike

August 17 Sassafras River Paddle

September 28 Morgan Creek, Chester River Paddle